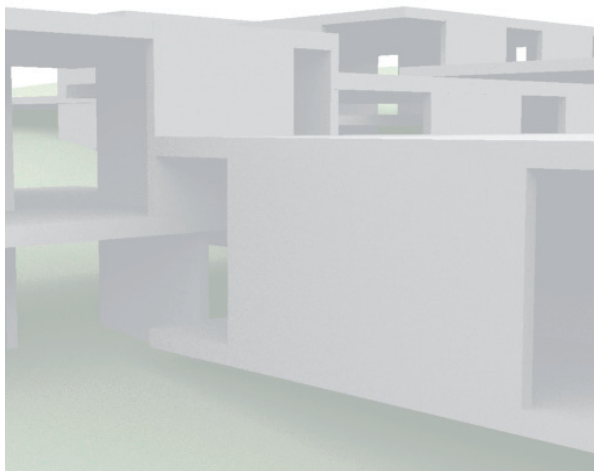


Polja | Fields

I s t | N a d i n

Master Basic Design Studio | Winter semester 2010
KTH | Kungliga Tekniska högskolan Stockholm



Design Project by Johan Meisel – Ist

Exhibition Opening:

24. October 2011. at 20.00 o'clock

Address: **Society of Architects, Zadar
Kraljskog Dalmatina 2/1**

Duration : **24.-30. October 2011.**

This exhibition will present 16 projects for the Research Center on Ist and Nadin from the Masters Studio of Design at KTH in Stockholm under the tutelage of Prof. Helena Paver Njirić.

The project sites are located on the former military compound on the island of Ist and in Nadin Field in Ravni Kotari district of Zadar county. Both spaces share a void-like character as well as the termination of their former functions. The built environment of both sites is in a state of disarray and is decaying with the passing of time. A field of islands, islands as fields, and fields as islands are key characteristics of the greater Zadar region, and the introduction of institutions for research and education would help these forgotten nodes participate in the expanded urban network that is Zadar.

These spaces have the capacity for becoming important for the city of Zadar through their recognizable modes of occupation, their particular landscapes, and their humble and ordinary beauty.

In preparing to design in this place, spatio-structural issues as well as semantic meaning of the landscape were carefully considered. This project is framed as a critical investigation of the programmatically simple center as a new interpretation of the atmospheric potential of the Mediterranean cultural landscape.

Affiliated Professor
Ass. Professor
Ass. Teacher

Helena Paver Njirić hpnj+, Zagreb
Leif Brodersen, A1 Arkitekter AB, Stockholm
Teres Selberg